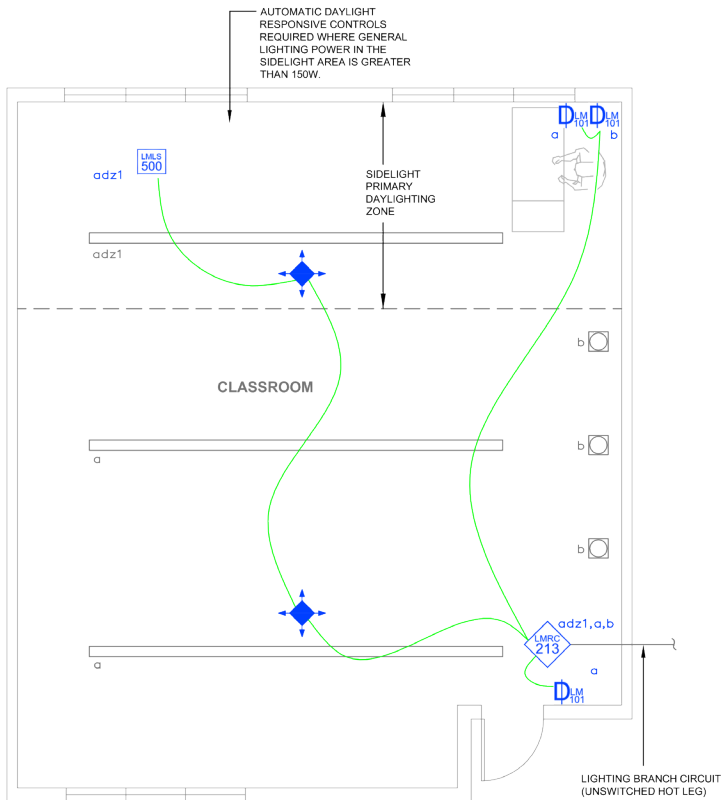


IECC (2015) Compliant Dimming with DLM Product



SEQUENCE OF OPERATION

1. General lighting (a, adz1) auto On to 50% when occupancy detected.
2. Manual On/Off/Dim and light reduction control of general lighting (a, adz1) with dimmer switches.
3. Manual On/Off/Dim white board lighting (b) with dimmer switch.
4. Lighting in daylight zone (adz1) will continuously dim based on daylight contribution to maintain at least 35FC at task level.
5. Auto Off all lighting within 20 minutes of occupants leaving.

DESIGN CONSIDERATIONS

- Although not required by IECC, receptacle control can be added to this space for additional energy savings using either an RF transmitter with receptacle RF receivers, or hardwired receptacles using an LMPL-101 Plug Load Room Controller.
- To integrate occupancy detection control with the HVAC System, use a LMRL-100 Isolated Relay Interface.

BILL OF MATERIALS

LMRC-213 (1)	3-Relay Room Controller, 0-10V Dimming
LMDC-100 (2)	Ceiling Mount Dual Tech Occupancy Sensor
LMDM-101 (3)	1-Button Dimming Wall Switch
LMLS-500 (1)	Photosensor Open Loop
LMRJ	Pre-Terminated Cable

CODE REQUIREMENTS

C405.2.1	Occupancy Sensor Controls
C405.2.1.1	Manual On / Partial Auto On
C405.2.2.3	Manual Controls
C405.2.2.2	Light Reduction Controls
C405.2.3.2	Daylight Responsive Control